

M/V Nordvåg



Increased reefer capacity.



Main particulars		Cargo capacity and equipment
Built: 1979, Norway	LOA: 88,8 m	Crane: 29 ts på 18 mtr. 25 ts på 25 mtr.
Flag/Register: FAS	Beam: 14,5 m	Side door: 8 x 5,5 m
Homeport: Tórshavn	Draft: 4,50 m / 5,20 m	Pallet elevators: 2 x 4 mtons
Class: RINA	DWT: 2.552 mtons	Hatch: 13,2 x 6,2 m
IMO: 7704849	GT/NT: 2.854 / 856	Reefer compartments: 1400 + 600 m ²
Call sign: OZBQ2		Reefer plugs: 15 pcs
Service speed: 12 knots		6 electrical forklifts 2,5 -3,0 mtons

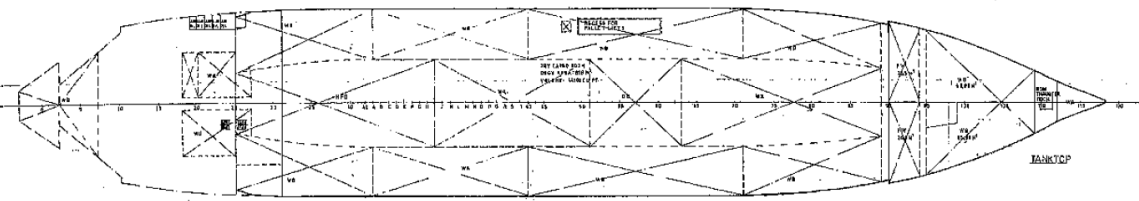
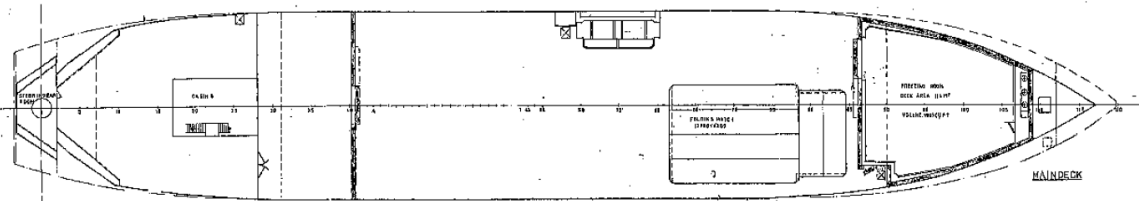
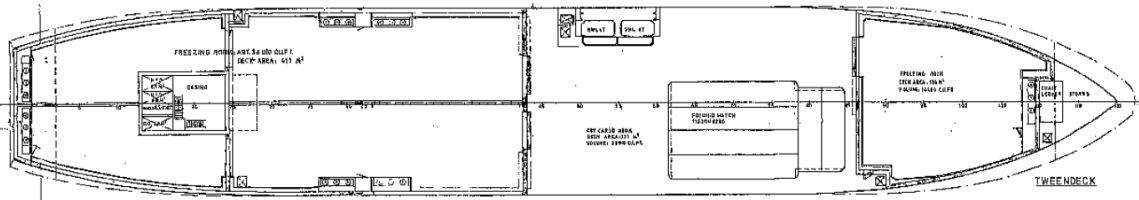
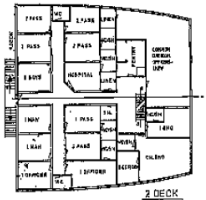
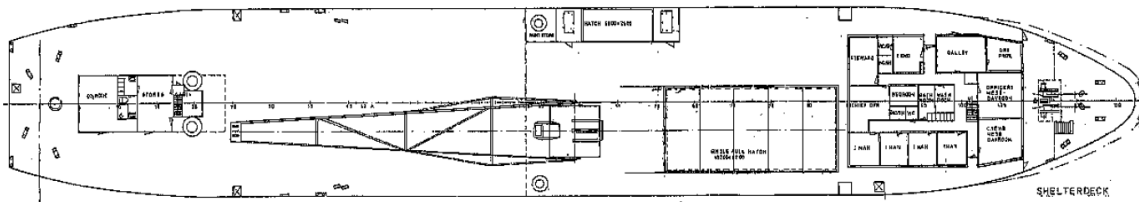
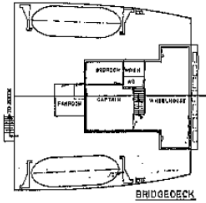
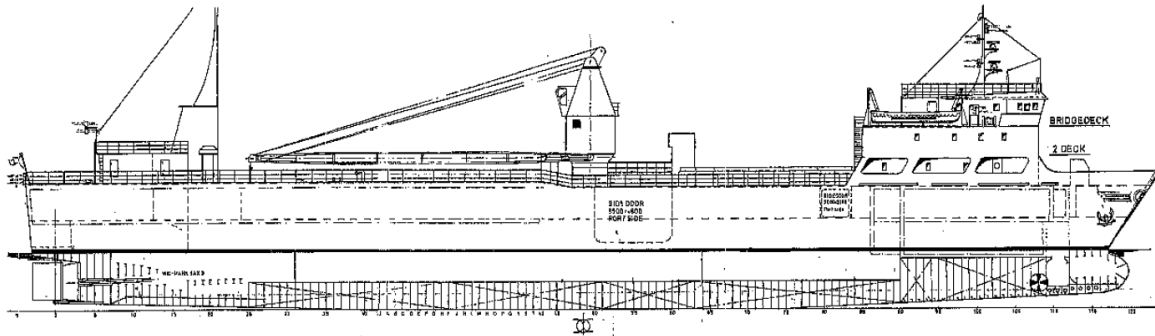
Deck:	Area:	Free height:	TEU
Shelter deck:	500 m ²		53
Tween deck:	880 m ²	2,10 m. 3,70 m in hatchcoaming.	5
Reefer – 28 degr.	534 m ²	2,04 – 2,26 m / 1,95 m in reeferdoors	
Main deck:	840 m ²	837	5
Reefer – 28 degr.	250 m ²	2,00- 2,04 m / 1,95 m in reeferdoors	
Reefer – 28 degr.	633 m ²	2,20 m	
Tanktop:	618 m ²	2,00 m	5
Reefer + 2 degr.	618 m ²	2,00 m	

All details believed to be correct but wog.

M/V Nordvåg



Increased reefer capacity.



MAIN PARTICULARS:
 Length overall 88.00 m
 Length between perpendiculars 72.00 m
 Breadth 12.00 m
 Depth m to SKELTERDECK 5.80 m
 Depth m to TWENDECK 6.50 m
 Depth m to MAINDECK 7.50 m
 Draught summer approx. 6.50 m
 Displacement approx. 1900 T