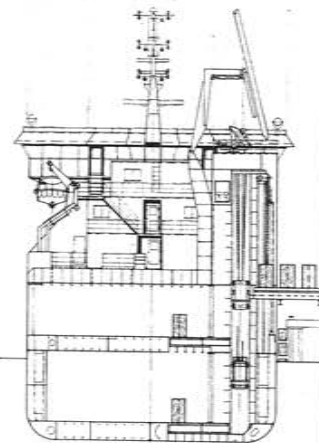
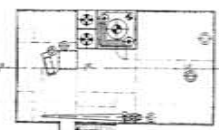


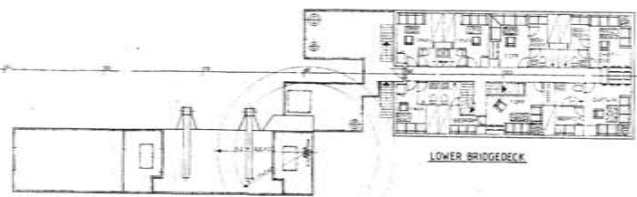
LONGITUDINAL SECTION



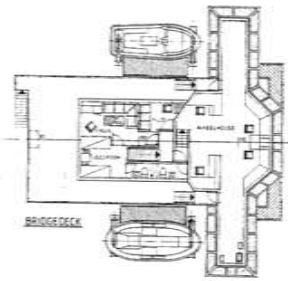
TRANSVERSE SECTION



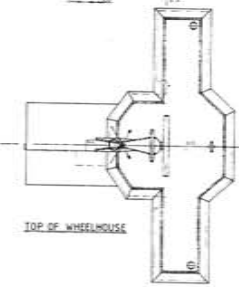
TOP OF DECKHOUSE



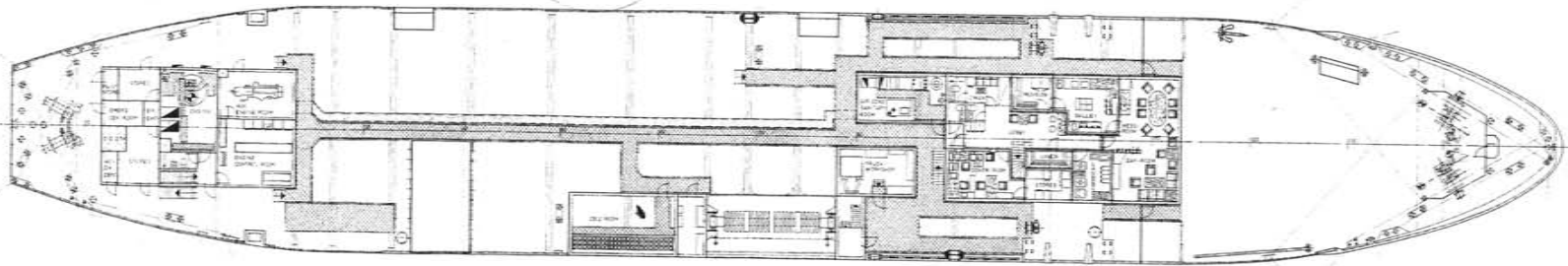
LOWER BRIDGEDECK



BRIDGEDECK



TOP OF WHEELHOUSE



1ST DECK

MAIN DIMENSION

LENGTH O.A.	110.50 M
LENGTH P.P.	102.05 M
BEAM	17.50 M
DEPTH MILD 1ST DECK	11.00 M
DEPTH MILD 2ND DECK	7.30 M
DRAUGHT MLD DESIGN	6.90 M
FRAMESPACING	0.70 M
CORRESPONDING DEADWEIGHT	45800 T
CAPACITIES	
CARGO-AREA ON TANKTOP A/B/T	680.48 M ³
CARGO-AREA ON 2ND DECK A/B/T	1115.48 M ³
SUMMARY A/B/T	1795.96 M ³
SPEED & POWER	
TRIAL SPEED A/B/T 15 KNOTS WITH 3700 BHP / 2200 KW	
AT DRAUGHT 5.10 M & BEAUFORT - 2 FOR WIND / SE	
CLASS	
DNV-1A1 ICE 1A PWDC E0	

NIPPON YUSEN KAISHA GENERAL-ARRANGEMENT PAPER-CARRIER	
26.87.201.0	